

Hop Quality Group Farm Report

2016



Heitman Hop Yards

Elmwood Valley Hops



Date: August 3rd, 2016

Attendees: Derek Stepanski – Bell’s

Location: Heitman Hop Yards

Alec Mull – Founders

Elmwood Valley Hops

Rob Serrine – Michigan State Extension

C & C Hops

Ellie Heitman – Heitman Hop Yards

Purpose: Pre-Harvest Quality Visit

Operations Description: Picking and Kilning is in one building. The building is an older building and mostly in good shape.

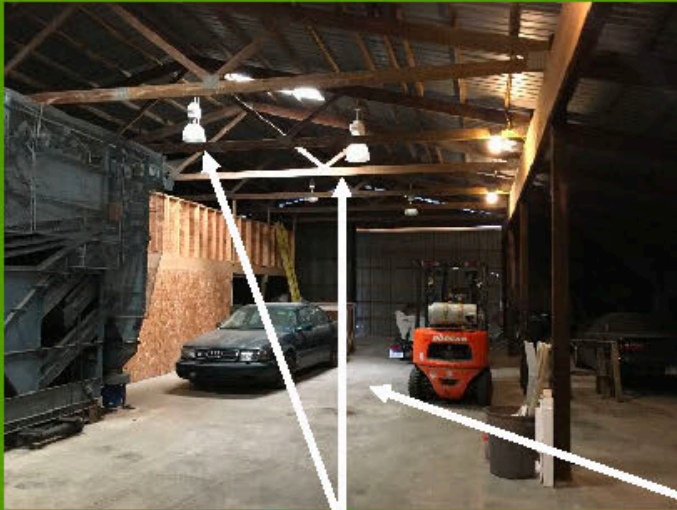
There is one 1972 Wolf Picker and one kilning bin. Bird proofing has a few open spots.

Areas of Concern: Verify that the lights in the picking and kilning building are explosion proof. There is a gap where the picker waste leaves the building. Magnets are not being used throughout the process. Food grade oil and lube is used throughout facility. Make sure there is an area that is designated for a breakroom, having a separate room for the employees to take a break is encouraged. We also encourage you to not store vehicles and machines and tools in the picking facility. Hops are a food product and should not touch surfaces that touch cars and snow machines

Recommendations: Add protective covers to all lighting or change them out to explosion proof lights. Add magnets to the picker to remove metal debris. Remove all clutter from facility. Remove stored vehicles from facility. Apply bird netting to gaps in the building. Overall the facility is in good condition and the recommendations are few and easily fixed.







Add protective covers to all lights



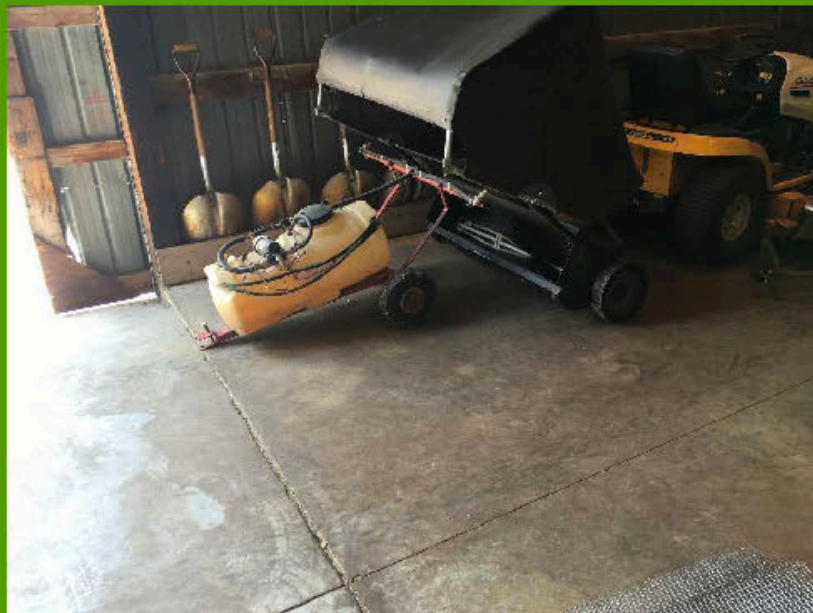
Remove all vehicles from picking facility



HOP QUALITY
GROUP
OILS OVER ALPHA EST. 2010



Add bird netting to all gaps in the building



Remove all tractors and especially unlabeled unknown chemicals and spraying equipment.



HOP QUALITY
GROUP
OILS OVER ALPHA EST. 2010



Remove all unknown chemical containers.



Add protective covers to all lights



HOP QUALITY
GROUP
OILS OVER ALPHA EST. 2010

