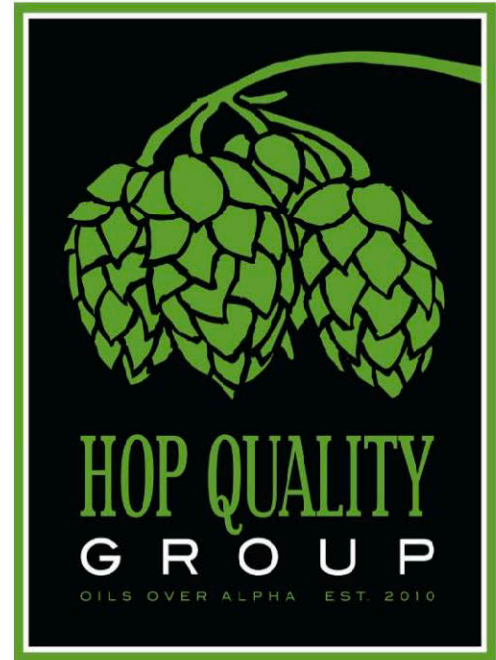


<b>HQG Pellet Mill Visit Date:</b>	06-24-2021
<b>Primary Owner/Operator:</b>	Michigan Hop Alliance Brian Tennis
<b>Physical Address of Facility:</b>	5790 N Omena Rise, Omena MI 49670
<b>Pellet Mill Contact:</b>	Brian Tennis
<b>Contact's Email Address:</b>	brian@hopalliance.com
<b>Contact's Email Phone:</b>	616-403-6880



<b>HQG Attendee &amp; Brewery</b>	
Alec Mull-Founders	Jason Vrosh-Founders
Chris Boggess-3 Floyds	
Matt Gallagher-Half Acre	
Derek Stepanski-Bells	
Geoff Wenzel-Industrial Arts	

**Operations Description:**

Facilities are in midst of an expansion to be completed prior to 21 harvest. Medium size pellet mill operation with intention to transition to "harvest fresh" pellets, straight from conditioning and skipping the bales. No bale breaker. HQG visited this mill in 2016 during installation and it has been taken apart and moved for the expansion to be completed and will be rebuilt prior to 21 harvest. In addition to the expansion, the intake area will be paved as well. Additional building perimeter drainage has been installed.
Two primary buildings for facilities. One for picking and pelletizing and one purpose-built building for chemical and equipment storage. New purpose-built 30 x 50 pellet mill building planned for 22 harvest.
New nitrogen purge and vacuum sealer for pellets (see photo).

**Areas of Concern:**

Magnets are always beneficial and should be employed at key areas of transition. One magnet exists prior to pellet mill which is a critical spot, but one immediately prior to bagging would help ensure metal free product.

**Improvements since last HQG visit (if applicable):**

New Nitrogen purge bag sealer. Drainage installed around perimeter; paving is planned at building entrance. New building for equipment and chemical storage complete.

**Additional Comments:**

Thanks for your continued focus on food safety.
<b>Additional Comments about the operation?</b>
Pursuing Global Gap.

**Recommendations:**

Ensure processing areas are free from clutter and designated cabinets for lubrication and chemical storage are used. Additional PPE requirements are always helpful for food and worker safety and additional obvious signage is appreciated.
Consider moving tables that could be used for employee breaks away from processing area. LED lighting is preferred for processing areas.
Magnets immediately prior to pellet bagging can be helpful.

**Hop Quality Group**

**Hop Pellet Mill Survey**

Facility Address- 5790 N Omena Rise, Omena MI 49670

Primary Owner/Operator- Brian Tennis

Manufacturer of Hammer Mill- Buskirk

Date of manufacture or installation- 6/26/2015

Motor size in KW or HP- 10 HP

Manufacturer of Pellet Mill- Buskirk

Date of manufacture or installation- 1/1/17

Motor size in KW or HP- 10HP

Blending capacity

Bale breaker bin capacity- 125 pounds

Powder tank capacity- 150

Blender type (Ribbon or Conical)- ribbon

Throughput capacity (per 24 hours)- 4000 pounds Rated at 400 pounds per hour

Magnet locations- Pellet Mill entrance

Pellet diameter and number of die sizes owned- 1 die • 12" diameter x 1.5" thick machined die plate, (¼" pellet)

Target temperature of pellet and cooling method- 105-115

Vacuum hard pack or soft pack and flush gas type- soft pack, food grade nitrogen

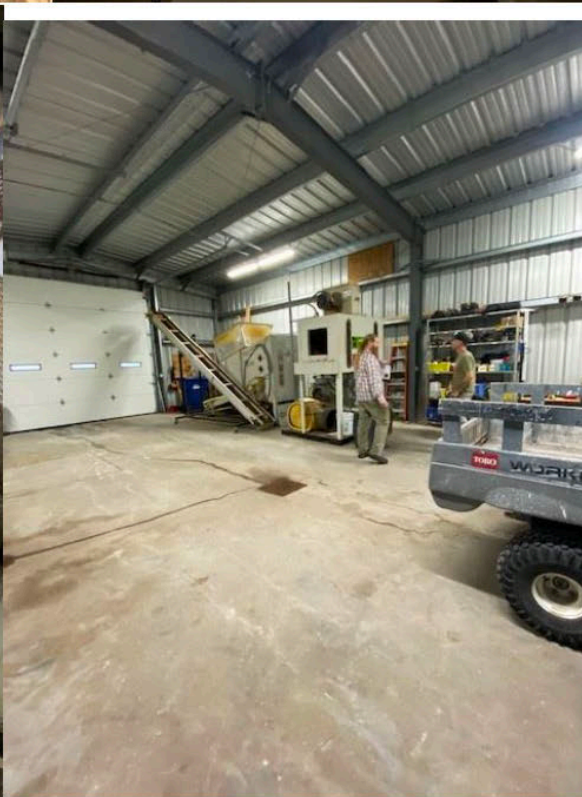
Quality tests performed- All lots are sent to Alliance Analytical Laboratories and/or Advanced Analytical Research. We run the full comprehensive tests. Acids, HSI, Moisture, Dry matter, 30+ compounds in all.

Laminate foil integrity tests performed and frequency of tests-

Standard label information- Lot, variety, weight, acids, oil, HSI, contact information

Frozen storage capacity- 250, 000 pounds offsite, 20,000 onsite, soon to be 40,000 onsite

Any third party certification- MDARD ad MEAP





PLEASE REMEMBER:  
**HOPS ARE A FOOD PRODUCT!**  
**RECUERDE POR FAVOR EL LÚPULO  
ES UN PRODUCTO ALIMENTICIO!**



PLEASE REMEMBER:  
**HOPS ARE A FOOD PRODUCT!**  
**RECUERDE POR FAVOR EL LÚPULO  
ES UN PRODUCTO ALIMENTICIO!**

